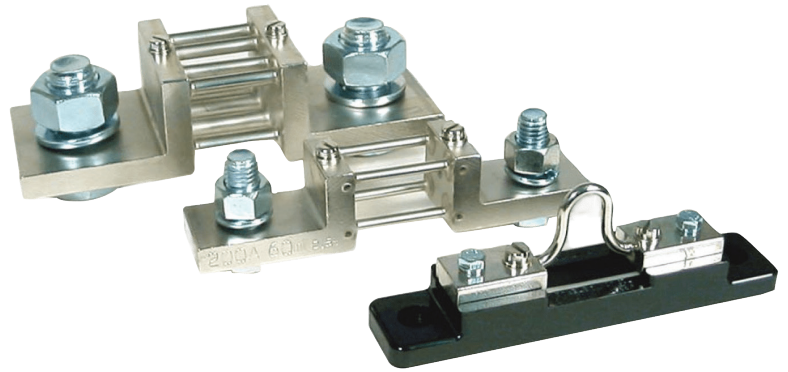


Shunts

Measuring currents in DC systems

Shunts are used in DC systems to measure currents for indicating in panel instruments or as inputs to transducers. Shunts are available both with and without sockets.



Applications

- Shunts are an important link in the DC measurement system together with panel instruments and transducers.
- Panels for electrical systems, power industries.
- All different type of control panels in industry, institutions etc.

Benefits

- Easy to connect.
- Covers a wide range of DC currents.

Features

- Available with socket for 5 A, 10 A, 20 A and 25 A.
- Available without socket from 30 A up to 15 kA.
- Voltage drop is 60 mV as standard, 75, 100, 120, 150 and 300 mV as options.
- Resistance rods are nickel-plated manganin on bars of copper with powerful terminals.



Technical specifications

Electrical

Voltage drop

60 mV ± 0,5 % shunts with voltage drops 75, 100, 120, 150 and 300 mV are available as options.

Mechanical

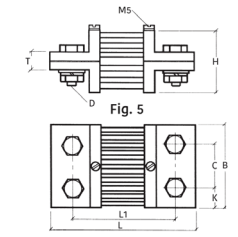
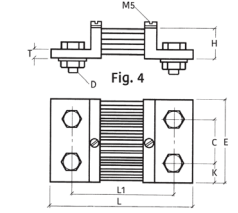
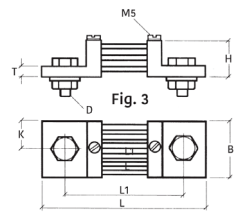
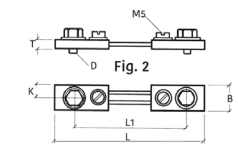
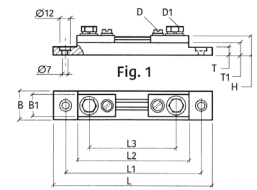
Material

Manganin resistance rods, copper bars.

Surface treatment

Nickel plated.

Dimensions														
Current A	Art No.	Fig.	L	L1	L2	L3	B	Bl	T	Tl	H	D	DI	
5	6105	1	140	115	95	78	30	20	8	16	25	M5	M5	KJ-3
10	6106	1	140	115	95	78	30	20	8	16	25	M5	M5	KJ-3
15	6107	1	140	115	95	78	30	20	8	16	25	M5	M5	KJ-3
20	6108	1	140	115	95	78	30	20	8	16	25	M5	M5	KJ-3
25	6109	1	140	115	95	78	30	20	8	16	25	M5	M5	KJ-
Current	Art No.	Fig.	L	L1	B	C	K	H	T	D				
30	6110	2	95	78	20	—	10	—	8	M8				
40	6111	2	95	78	20	—	10	—	8	M8				
50	6112	2	95	78	20	—	10	—	8	M8				
60	6113	2	95	78	20	—	10	—	8	M8				
75	6114	2	95	78	20	—	10	—	8	M8				
100	6115	2	95	78	20	—	10	—	8	M8				
150	6116	2	95	78	20	—	10	—	8	M8				
200	6117	3	145	105	30	—	15	30	10	M12				
250	6118	3	145	105	30	—	15	30	10	M12				
300	6119	3	145	105	30	—	15	30	10	M12				
400	6120	3	145	105	40	—	20	30	10	M16				
500	6121	3	145	105	40	—	20	30	10	M16				
600	6122	3	145	105	40	—	20	30	10	M16				
700	6123	3	145	105	50	—	25	30	10	M16				
800	6124	3	145	105	50	—	25	30	10	M16				
900	6125	3	165	115	60	—	30	40	10	M20				
1000	6126	3	165	115	60	—	30	40	10	M20				
1200	6132	4	165	115	90	48	21	40	10	M16				
1500	6127	4	165	115	90	48	21	40	10	M16				
2000	6128	4	165	115	90	48	21	40	10	M16				
2500	6129	4	165	115	120	60	30	40	10	M20				
3000	6130	4	165	115	120	60	30	40	10	M20				
4000	6131	4	165	115	120	60	30	40	10	M20				
6000	6133	5	165	115	120	60	30	80	20	M20				
8000	6134	5	165	115	120	60	30	80	20	M20				
10000	6135	5	185	135	154	2x52	25	140	30	M20				
12000	6136	5	185	135	154	2x52	25	140	30	M20				
15000	6137	5	185	135	206	2x52	25	140	30	M20				



Specifications are subject to change without prior notice

Africa
sales_africa@securemeters.com

Australia
sales_australia@securemeters.com

Europe
sales_europe@securemeters.com

India
sales_india@securemeters.com

South East Asia
sales_sea@securemeters.com

Middle East
sales_middleeast@securemeters.com

UK
sales_uk@securemeters.com

www.securemeters.com