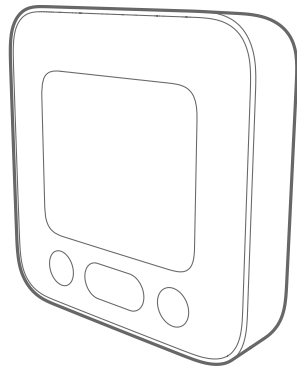


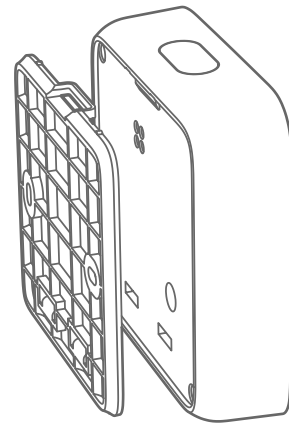
# SCD100-000

## Programmable Thermostat Display PTD

To be used with Secure Controls products



### **i** In the box



Programmable Thermostat Display PTD + Backplate



RF



### **i** Technical specifications

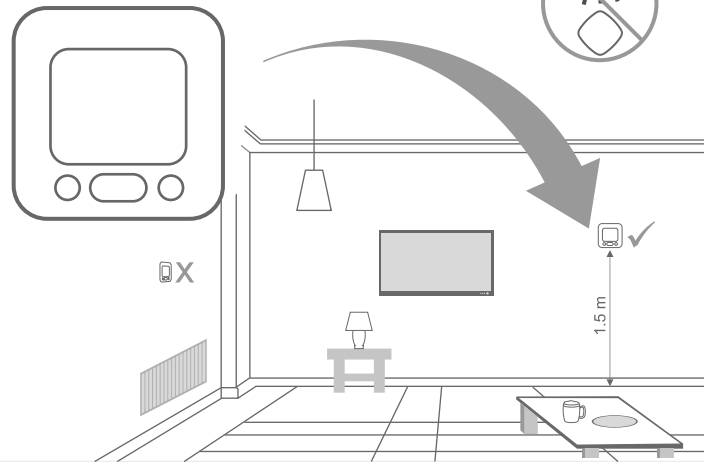
Operating temperature	0°C to 40°C
Storage temp. range	-20°C to +70°C
Relative humidity	0% to 95% non condensing
Pollution degree	2
Ingress protection	IP30
Battery specifications	Non replaceable 2x A Lithium-ion, 3.6 V, 3600 mAh (each)
Battery life	≈12 years
Wireless communication	2.4 GHz RF
Standards	1. BS EN/EN 300-328 2. Safety standards: BS EN/IEC 62368-1 3. BS EN/EN 301 489-1, 17 (RED) 4. RoHS 2 5. WEEE

Follow these instructions and safety measures to avoid risk of injury or damage to the equipment.

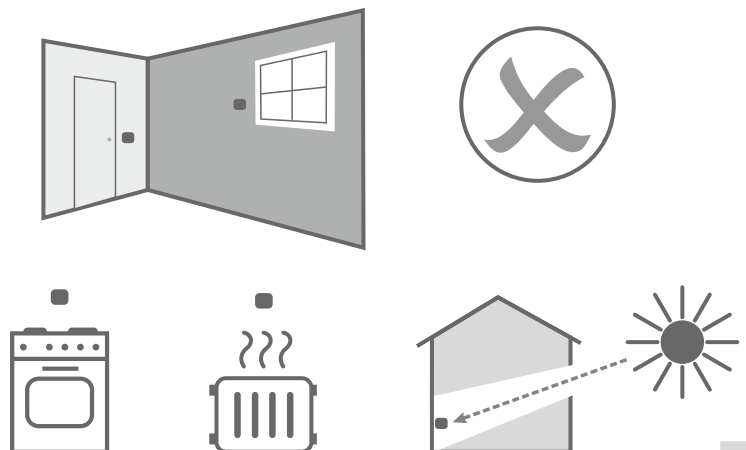
- Local best practices and regulatory stipulations must be observed.
- Installation should be done by trained personnel only.
- Do not use solvents or abrasive materials to clean the device, use only a anti-static cloth.

As part of Secure Meter's continuous endeavour to improve, product design and specifications mentioned are liable to change. System functionality information, illustrations and product aesthetics published in the document may vary from those of your product.

### **i** Ideal mounting location



### **i** Locations to avoid



# SECURE

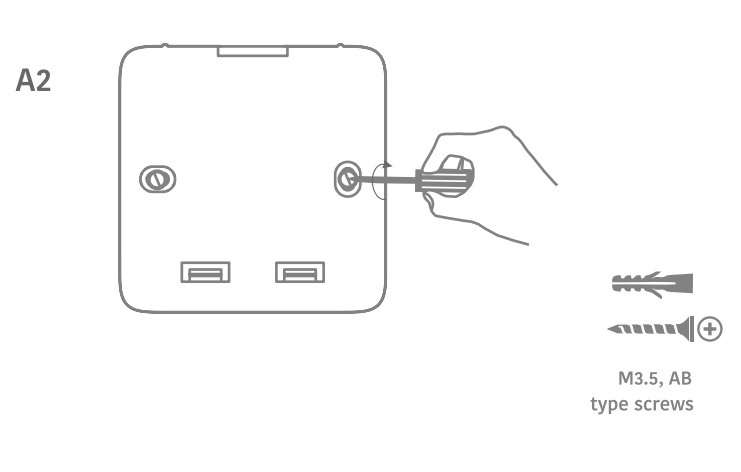
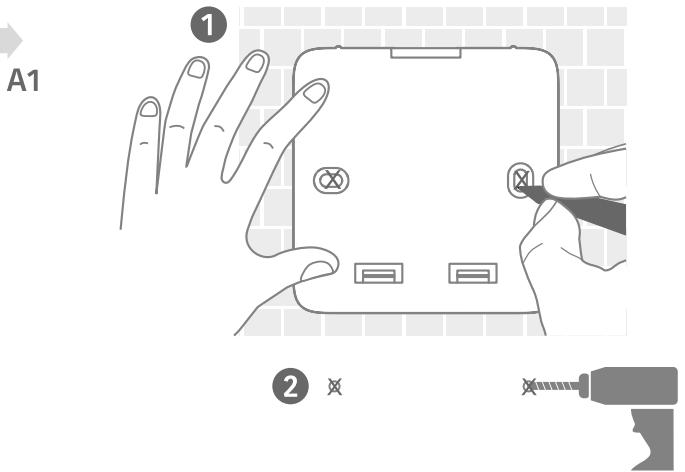
Secure Meters (UK) Ltd  
Secure House, Lulworth Close,  
Chandler's Ford,  
Eastleigh, SO53 3TL,  
United Kingdom  
t: +44 1962 840048  
f: +44 1962 841046  
UK Free Phone : 08081687224  
UK Direct : +44 196 2826 225  
www.securemeters.com  
Copyright © 2020-21, SIHPL



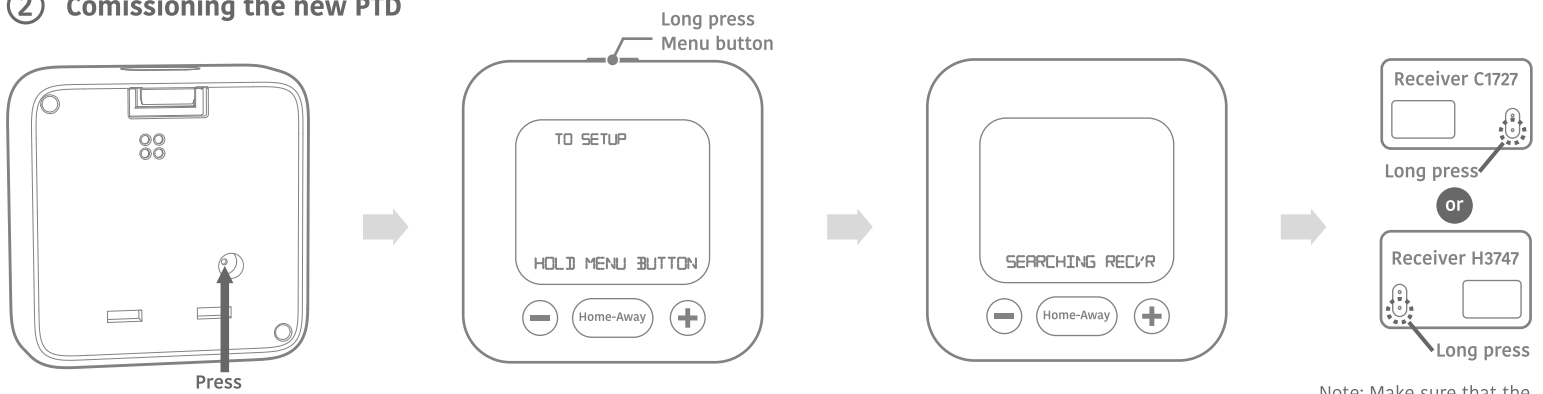
BGX701-291

BGX701-291-R02

# 1 Installation

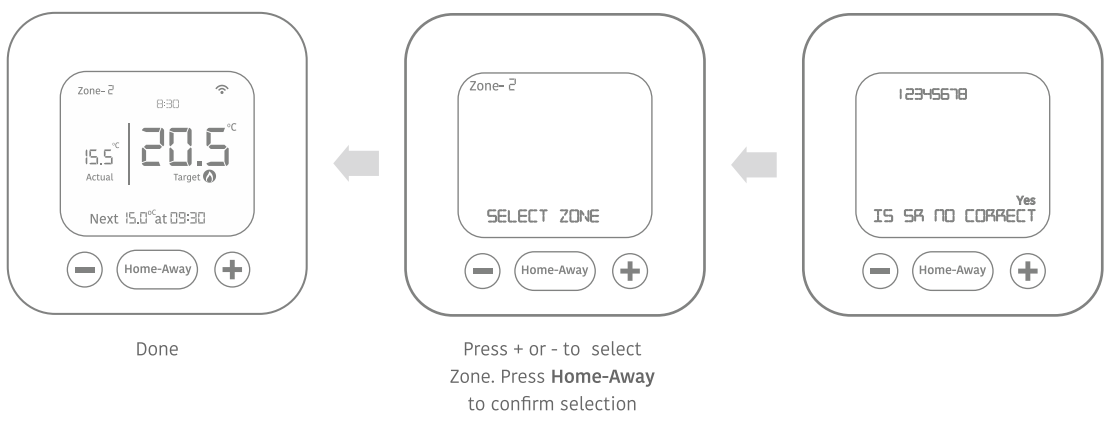


# 2 Commissioning the new PTD

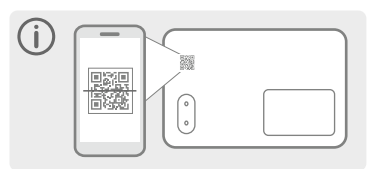


Note: The product is shipped in deep sleep mode to save battery. To wake up the device, you must press the button at the rear before setup. The PTD has great temperature sensitivity and you may observe a sudden rise in ambient temperature during the commissioning process triggered by your touch. This is only temporary.

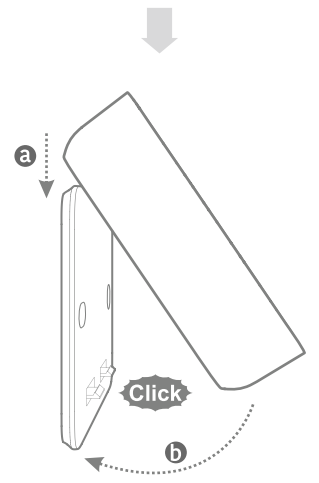
Note: Make sure that the receiver is powered On.



PTD will search for the receiver and display the receiver serial number. To verify the number, check your product box packaging or scan the QR code on the receiver using your smart phone. Press + or - to select (Yes or No). Press Home-Away to confirm selection



# 3 Mount



Refer to the user manual for more details

