



## Monitor energy, anywhere, anytime

eWatch Online is a web based service for monitoring energy consumption, cost, operational efficiency and system status. It provides all the information an organisation needs to manage its power system and reduce its energy costs. It enables the performance of the energy system to be optimised, through features including consumption monitoring, analysis of emissions and alerts issued using mobile technology.

eWatch Online enables the exchange of data from different utilities, such as electricity, gas, heat and water. Live data from energy measuring points can be viewed in real time from any location with internet access.

The service model is flexible, so only the required number of meters and gateways need to be purchased, according to the number of monitoring points. Various service level options are available from the website, according to need, application and budget. Data sim or broadband connectivity is required for data communication at site.

### Application

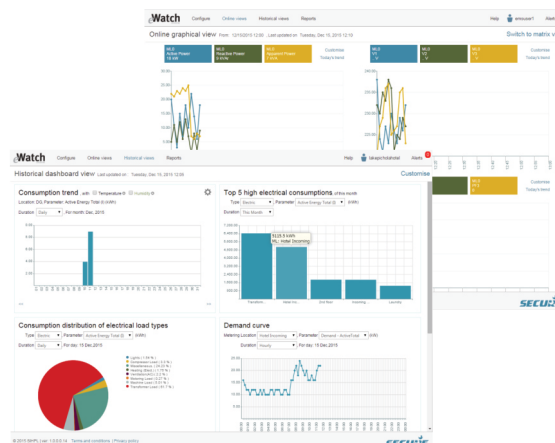
- Industry, micro, small and medium enterprises (MSMEs)
- Factories, offices, commercial buildings, hotels and institutions
- Industries and buildings purchasing power under open access
- Distributed generators and discrete loads
- Sub-tenant billing
- Multi-location retail chains

### Benefits

- Helps create cost awareness for utility consumption (electricity, gas, heat and water)
- Isolate waste from efficiency
- Set realistic targets for energy consumption
- Verify the effectiveness of operational charges
- Learn where and when energy is consumed
- Carbon emissions through meaningful real-time displays
- Monitor the performance of geographically distributed assets as required, even while on the move
- Enables and encourages active participation by managers and staff
- Provides accurate information from any location with internet access
- Helps energy efficiency certification targets to be met
- Affordable licensing arrangements spread the cost and provide lifetime savings

### Skyline gateway

- 'Daisy chain' connection for multiple meters
- Gateway collects data from meters
- Direct ethernet communications also supported
- Gateway sends data to eWatch online central data centre (CDC) over GPRS/broadband
- Integral 256 MB memory



### Feature

- Real-time personalized dashboards
- Shift wise energy monitoring and analysis
- Consumption reports for energy groups
- User configurable spreadsheet based reports
- Production data can be entered
- Historical graphs and trends
- 'Virtual meters' for in-depth analysis of a group
- Provision to integrate gas, heat and water
- Tariff module for cost calculations
- Target demand and open access schedule monitoring
- Alerts for deviations from targeted consumption
- Downloadable reports via e-mail or spreadsheet
- Choice of package to suit individual need

### Mobile application

- It has a key feature of providing all the monitoring over mobile app, which is available for Android and iOS smartphones
- Users can download the app and run it with the same login created during service purchase
- User gets instant alerts/event notification over app
- User can configure new gateways and can view the data anywhere at anytime

# eWatch Online

## Measure

- Electricity supplied by the grid
- Electricity supplied by diesel generators (DG)
- Electricity generated from renewable sources
- Electricity consumed: total, per load, or feeder-specific
- Power factor and demand

## Monitor

- Energy consumed against production
- Actual demand against contract demand
- Target demand against open access schedule
- Reactive energy against load
- CO2 emissions against energy consumption
- Consumption of different types of load or energy
- Locations with high consumption
- Building energy consumption with respect to temperature and humidity
- Consumption by department or location, using virtual groups
- Electricity, gas, heat and water consumption

## Analyse

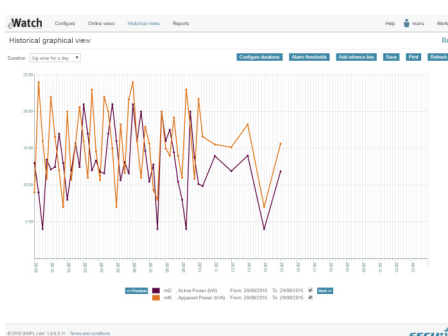
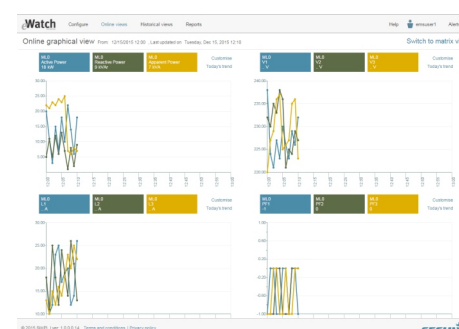
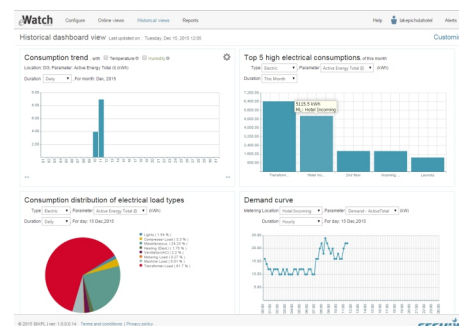
- Key performance indices (KPIs)

## Industry

- Production per unit energy consumption
- Compare consumption trends of different locations

## Building

- Energy consumption per unit floor area
- Energy consumption per person, per month
- Compare consumption trends of different locations



Features	Packages			
	Trial/free*	Silver (entry level)	Gold (essential level)	Platinum (advance level)
Duration	15 days	Min 1 year to max 5 years (in multiples of 1 year)	Min 1 year to max 5 years (in multiples of 1 year)	Min 1 year to max 5 years (in multiples of 1 year)
Meter reading frequency (minutes)	15	15, 30, 60	15, 30, 60	1, 3, 5, 15, 30, 60
Basic feature (dashboard, views, cost analysis, alarms, reports on e-mail)	✓	✓	✓	✓
Multifuel support	✓	X	✓	✓
Carbon monitoring	✓	X	✓	✓
SEC support	✓	X	✓	✓
Mobile app/alert	✓	X	✓	✓
On demand reports	✓	X	✓	✓
Open access/scheduled demand analysis	✓	X	X	✓
Support of meters/load points	1	1 to 1000	1 to 1000	1 to 1000
Number of simultaneous users	1	<=5	<=20	<=50

\*Meters need to be purchased for trial or free services.

\*\*Service price will vary based on number of meters & user selection.



## Package feature details:

### Carbon monitoring

The carbon factor for fuels such as electricity, gas, water, heat and DG can be defined, allowing carbon emissions to be evaluated over selectable intervals, such as daily or monthly. Comparison data and reports can also be generated.

### Multi-fuel support

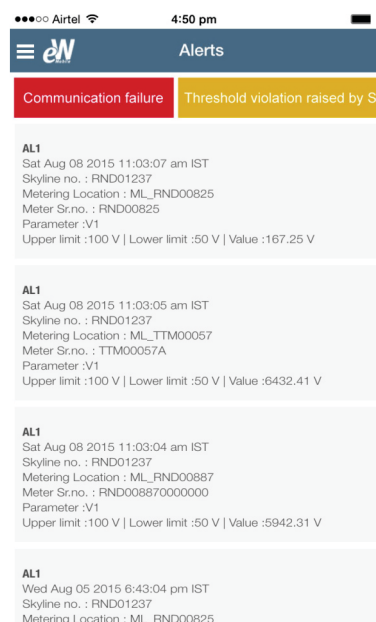
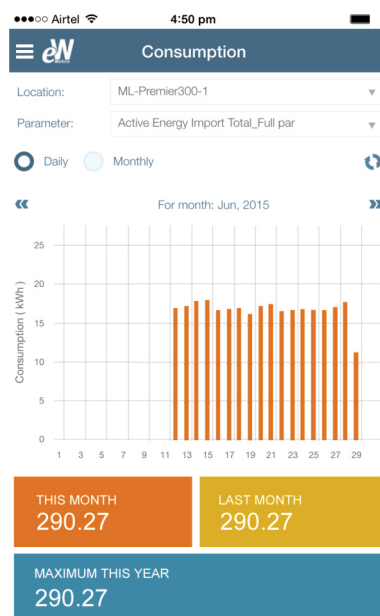
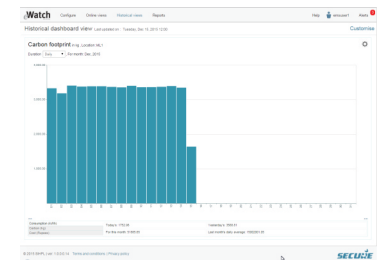
Provides comprehensive solution to integrate with additional fuel meters, including gas, water, heat and electricity. eWatch Online can communicate with multi-fuel meters through pulse-to-Modbus converters.

### Specific energy consumption (SEC)

The entity's production plan can be entered into the system, so that production output can be monitored against energy consumption. Reporting facilities are also provided for periodic data analysis.

### Mobile app

Facilitates all the monitoring and alerts feature over mobile app.



The screenshot shows the 'Reading Snapshot' screen in the eWatch mobile app. It displays a table of reading data. The table has two columns: 'Parameters' and 'Values'. The data is as follows:

Parameters	Values
V1	6413.68 V
V2	0 V
V3	13.53 V
Vavg	48.69 V
V12	6413.68 V
V23	13.53 V
V31	6424.78 V
L1	14.31 A
L2	0 A
L3	4.93 A
Active Power	91.69 kW
Reactive Power	-3.25 kVAr
Apparent Power	91.75 kVA
Power1111 - Active Import Total_Full	-0.999

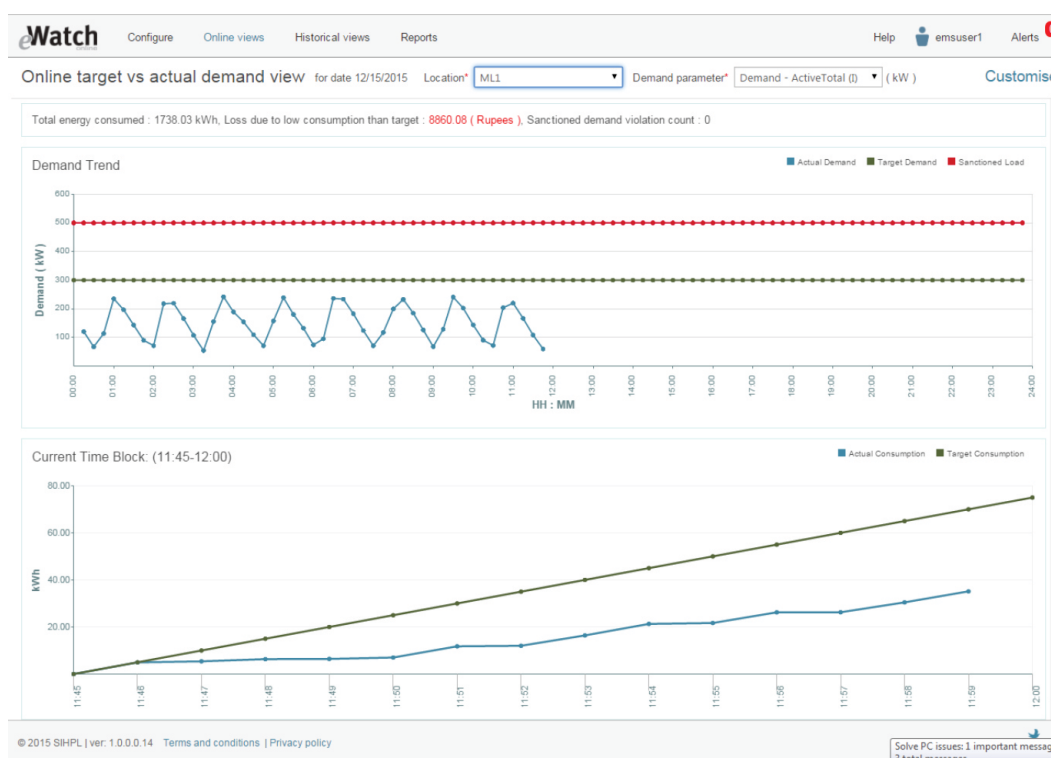


## On demand reports

- Consumption: daily, monthly, shift-wise daily and monthly, savings per interval
- Maximum demand: daily and interval-wise saving
- Parameter report: daily
- Min/max: daily
- Bill report: monthly
- Meter replacement: by day
- Non-electric consumption: daily, monthly and savings per interval
- Specific energy consumption: daily, monthly and daily per shift
- DG consumption on/off: daily, monthly and savings per interval
- Actual demand versus target: daily
- Carbon footprint: monthly

## Open Access

The Open Access schedule received from the Indian Energy Exchange can be entered, enabling demand progress to be tracked minute-by-minute. Energy pattern reports enable the effectiveness of purchased power to be monitored and analysed.



## Skyline gateway purchase

### Polling frequency

1 minute/3 minute/5 minute  
15 minute/30 minute/60 minute

### Number of meters per gateway

Maximum 10  
Maximum 25

For login and service purchase visit - <https://dataservices.ewatch.online>

### Australia

sales\_australia@securemeters.com  
www.securemeters.com/au

### Dubai

sales\_middleeast@securemeters.com  
www.securemeters.com/me

### Europe

sales\_europe@securemeters.com  
www.securemeters.com/eu

### India, SE Asia, Africa

sales\_india@securemeters.com  
www.securemeters.com/in

### UK

sales\_uk@securemeters.com  
www.securemeters.com/uk