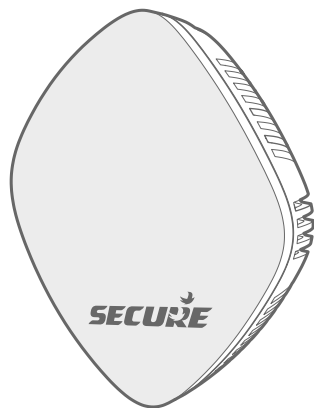


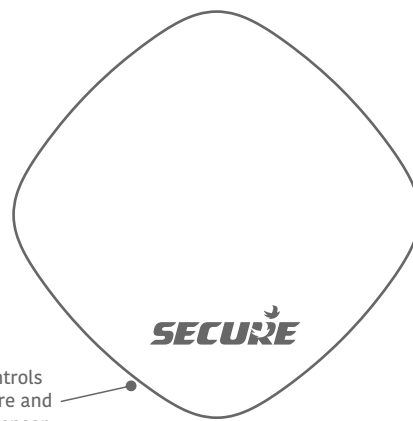
# SCS100-000

## Temperature Sensor THS

To be used with Secure Controls products



### **i** In the box



Secure Controls temperature and humidity Sensor

### **i** Technical specifications

Operating temperature range	0°C to 40°C
Pollution degree	2
Ingress protection	IP30
Operating humidity	0% to 95%, relative humidity, non condensing
Storage temperature range	-20°C to +70°C
Battery specifications	2 x AAA type batteries (1.5 V each)
Battery life	Up to 3 years
Wireless communication frequency	2.4 GHz RF
Compliance	EN300 489 -1 (Radio EMC), EN 300 489 -17 (Radio EMC broadband data transmission), EN300 328 (2.4GHz wideband), RoHS



RF

RoHS

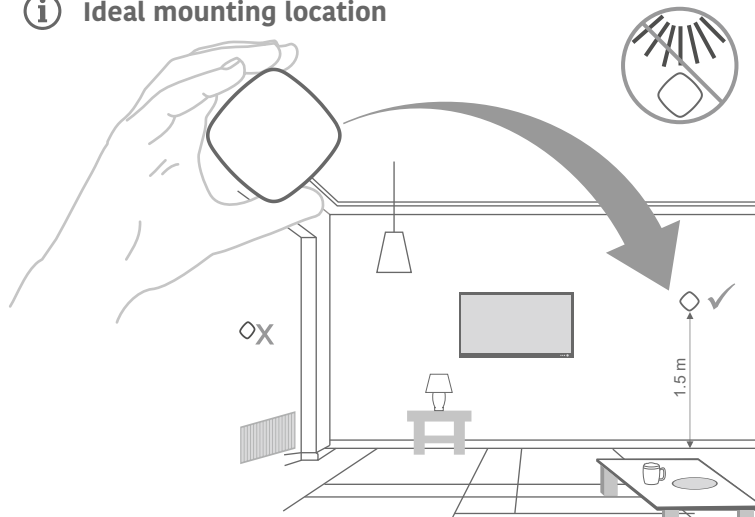


Follow these instructions and safety measures to avoid risk of injury or damage to the equipment.

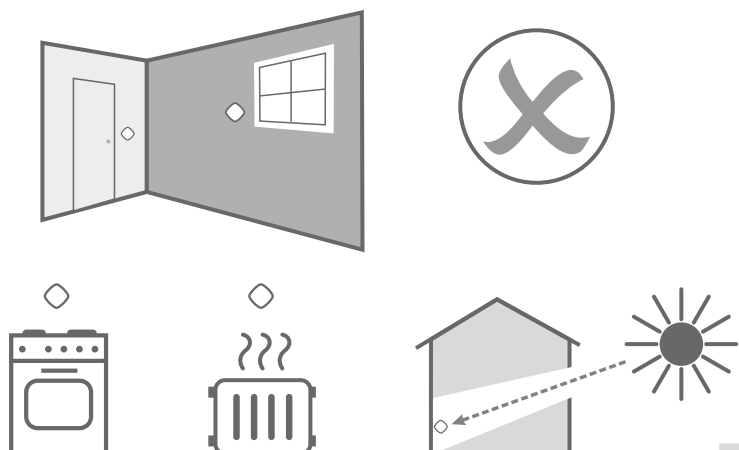
- Local best practices and regulatory stipulations must be observed.
- Installation should be done by trained personnel only.
- Do not use solvents or abrasive materials to clean the device, use only a anti-static cloth.

As part of Secure Meter's continuous endeavour to improve, product design and specifications mentioned are liable to change. System functionality information, illustrations and product aesthetics published in the document may vary from those of your product.

### **i** Ideal mounting location



### **i** Locations to avoid



# SECURE

[www.securemeters.com](http://www.securemeters.com)

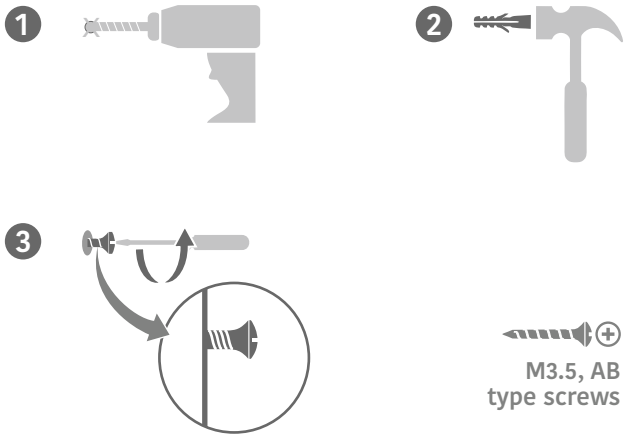
Secure Meters (UK) Ltd  
South Bristol Business Park,  
Roman Farm Road, Bristol, BS4 1UP  
United Kingdom  
Bristol Phone: +44 117 9788 700  
UK Free Phone : 08081687224  
UK Direct : +44 196 2826 225  
support@securemeters.com  
Copyright © 2020-21, SIHPL



BGX701-292

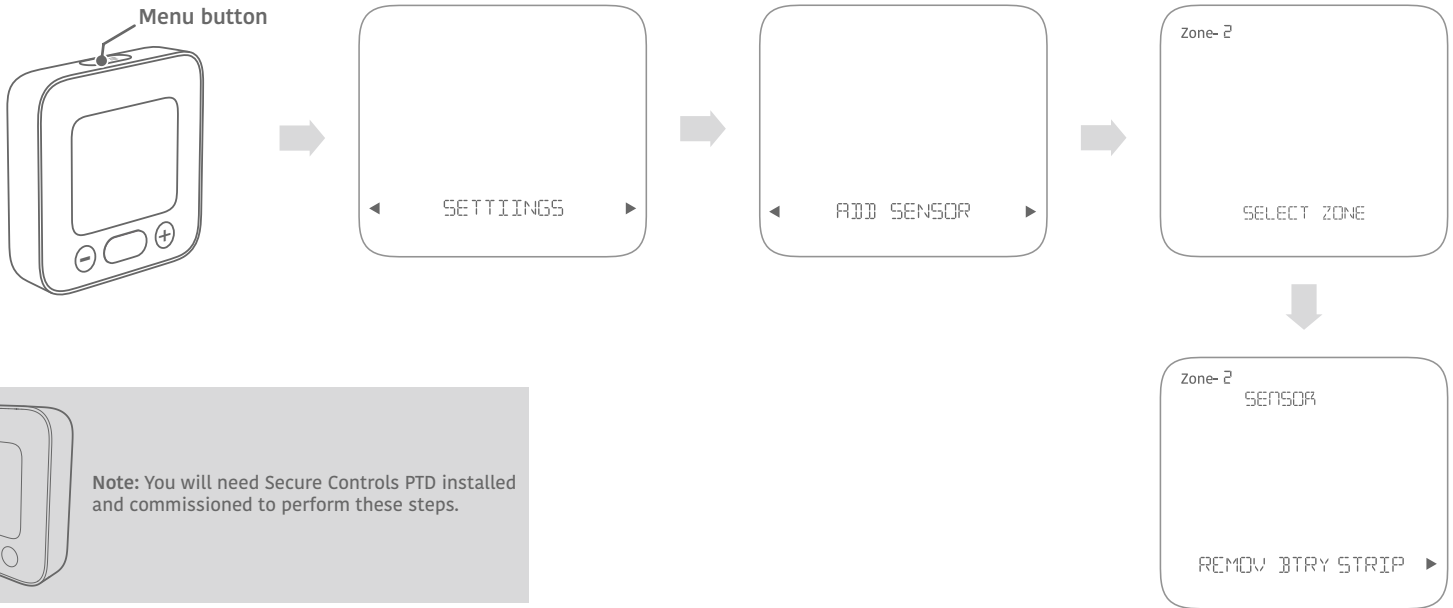
BGX701-292-R02

## ① Drilling and nailing

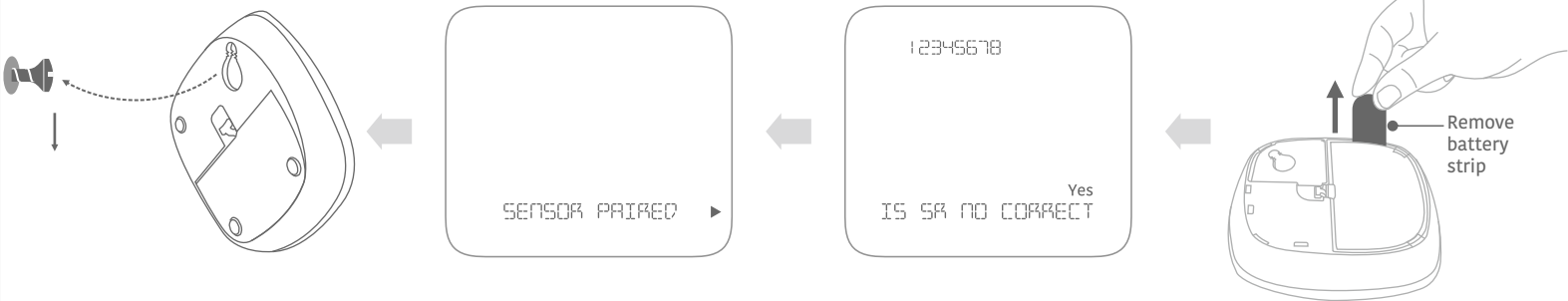


## ② Commissioning and mounting the THS

- ① On the Secure Controls PTD, Press the **Menu button** at the top to enter the main menu.
- ② Navigate to **Settings** menu using +/- buttons and press **Home-Away** to enter.
- ③ Navigate to **Add Sensor** option using +/- buttons and press **Home-Away** to enter.
- ④ **Select Zone** screen appears. Select the respective zone by using +/- buttons and press **Home-Away** to enter.
- ⑤ The **Remove battery strip** screen appears. Make sure to remove the battery strip on the THS and press **Home-Away** to confirm.
- ⑥ PTD will search for the sensor and display the sensor serial number. To verify the number, check the sticker on the sensor. Press **Home-Away** to confirm
- ⑦ When the sensor is paired, a confirmation message will appear.
- ⑧ Mount the THS.

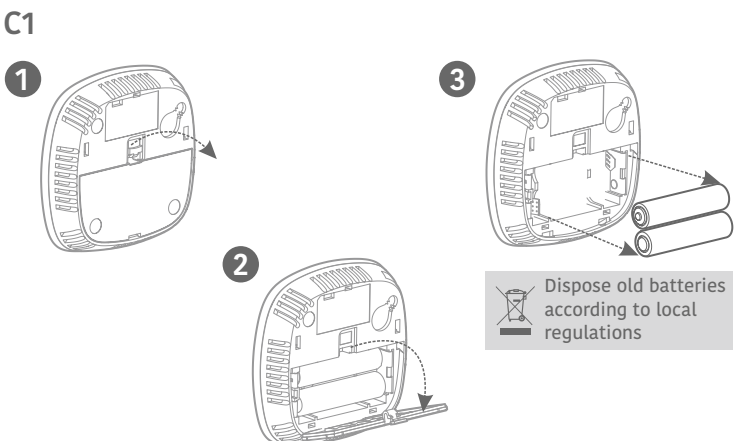


**Note:** You will need Secure Controls PTD installed and commissioned to perform these steps.



**Note:** If the battery strip is already removed, do the following:  
 1. Open the battery cover and remove both the batteries.  
 2. Wait for 8-10 seconds and re-insert the batteries.  
 3. Replace the cover back.

## ① Battery replacement



## ① Battery replacement

